



Irene Gomez-Bethke Papers.

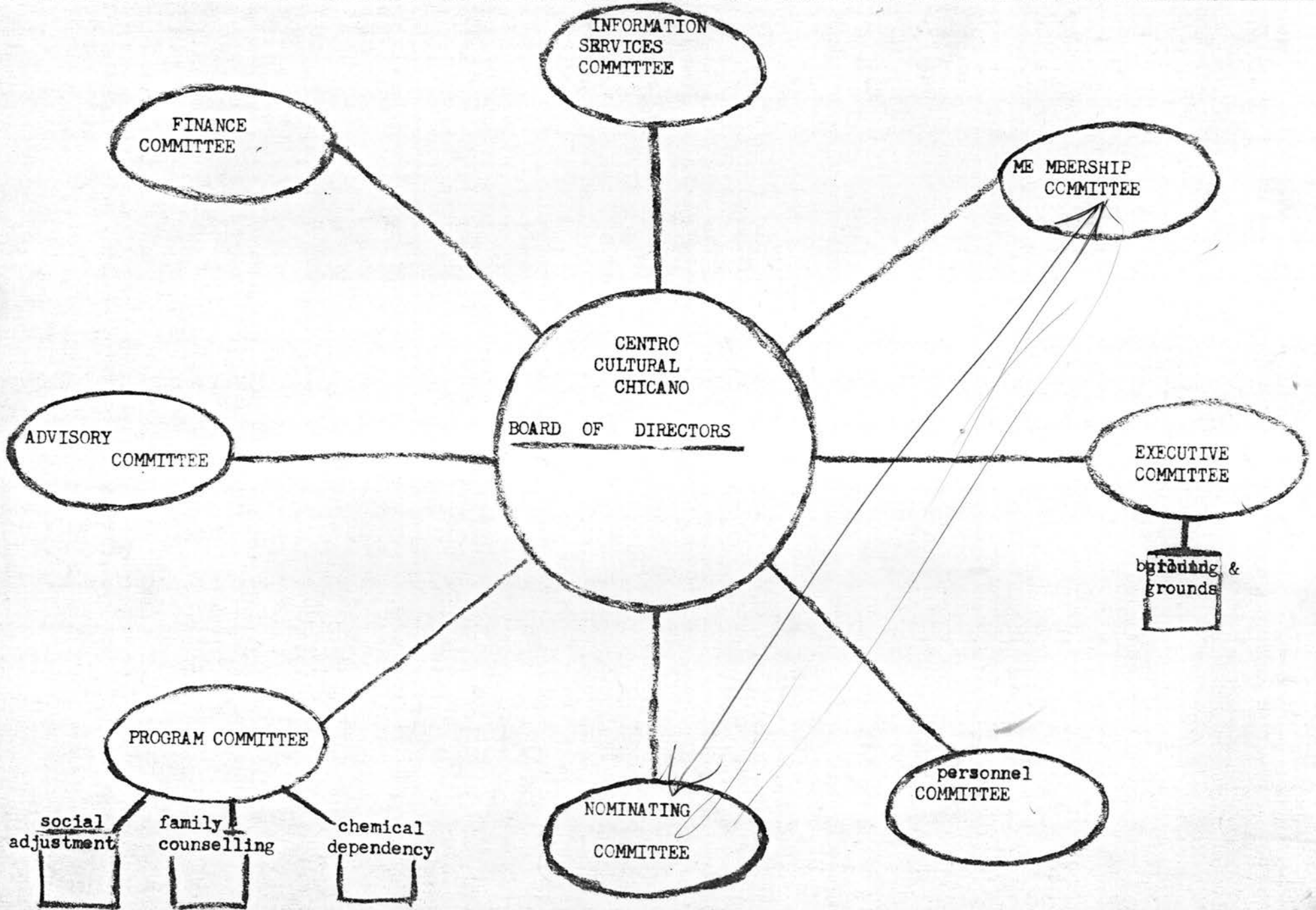
Copyright Notice:

This material may be protected by copyright law (U.S. Code, Title 17). Researchers are liable for any infringement. For more information, visit www.mnhs.org/copyright.

- — board of directors
- — standing committees
- — sub-committees

CENTRO CULTURAL CHICANO

BOARD STRUCTURE
July 10, 1980



BOARD OF DIRECTORS

EXECUTIVE DIR.

~~ASSOCIATE~~
DIRECTOR

~~MVP~~

West
1/27/40

5 staff

PROGRAM SUPERVISOR

PROGRAM WORKER

PROGRAM WORKER

CHEMICAL
Dependency
PROGRAM SUPERVISOR

PROGRAM WORKER

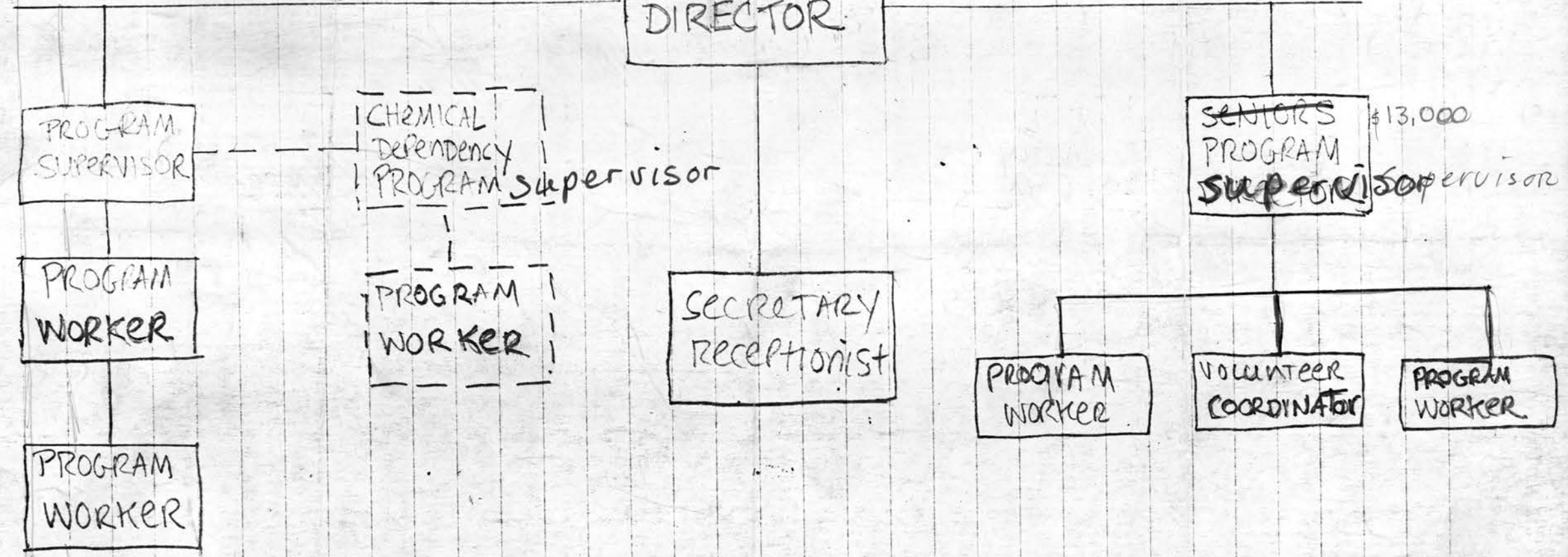
SECRETARY
RECEPTIONIST

~~SENIORS~~ PROGRAM SUPERVISOR \$13,000

PROGRAM WORKER

VOLUNTEER COORDINATOR

PROGRAM WORKER



CENTRO CULTURAL CHICANO

